

PART OF THE NE. 1/4 OF SECTION 10 & THE S. 1/2 OF SECTION 3, T.6N., R.1E., S.L.B. & M.

189

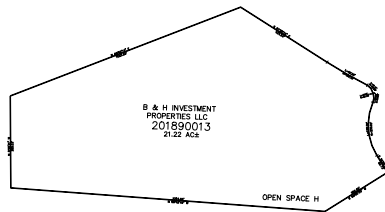
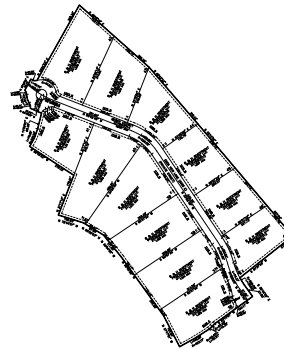
## THE RESERVE AT CRIMSON RIDGE PHASE 2A

IN WEBER COUNTY

TAXING UNIT: 28

SCALE 1" = 400'

SEE PAGE 5



SEE PAGE 5

10' UTILITY & DRAINAGE EASEMENTS EACH  
SIDE OF PROPERTY LINES AS INDICATED  
BY DASHED LINES EXCEPT AS OTHERWISE  
SHOWN.

FOR COMPLETE SURVEY DATA SEE  
ORIGINAL DEDICATION PLAT IN  
BOOK 93, PAGE 39-41 OF RECORDS.